

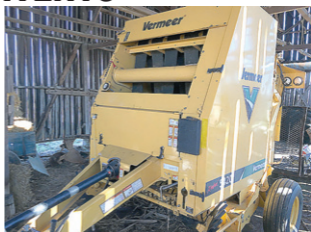
**COMING ABSOLUTE AUCTION**

**SAT., MARCH 9 - 10:30 A.M.**

**BUTCH & CATHY  
CECIL'S**

**90± ACRES IN 2 TRACTS  
PLUS LINE OF NEWER MACHINERY  
& CONTENTS**

**2015 VERMER  
REBEL 5420  
ROUND BALER,  
10 WHEEL HAY  
RAKE, N.H. 615  
DISC MOWER**



**50± ACRES**



**40± ACRES**



**LAND - 50± ACRES OF CROPLAND  
40± ACRES OF OPEN &  
WOOD PASTURE LAND**

**LOCATED:  
367 Ed Cecil Road, Raywick**

**FOR AERIALS, PHOTOS, & MORE INFORMATION  
[WWW.MAYANDPARMAN.COM](http://WWW.MAYANDPARMAN.COM)**

**NOTE: 10% buyer's premium will be added to all winning bids to determine final sales price.**

**Principal Broker/Auctioneer: Wm. M. (Monty) Parman  
270-402-1176**

**MAY &  
PARMAN** AGENCY  
INC.  
**REAL ESTATE-AUCTIONS-INSURANCE**

[www.mayandparman.com](http://www.mayandparman.com)



**151 West Main Street  
270-692-2153  
1-800-871-0523  
Lebanon, KY 40033**