

AUCTION EXHIBIT  
NOT TO SCALE  
PRELIMINARY PLAT  
NOT FOR RECORDING  
OR LAND TRANSFER  
ALL DISTANCES AND  
ACREAGES ARE  
APPROXIMATE

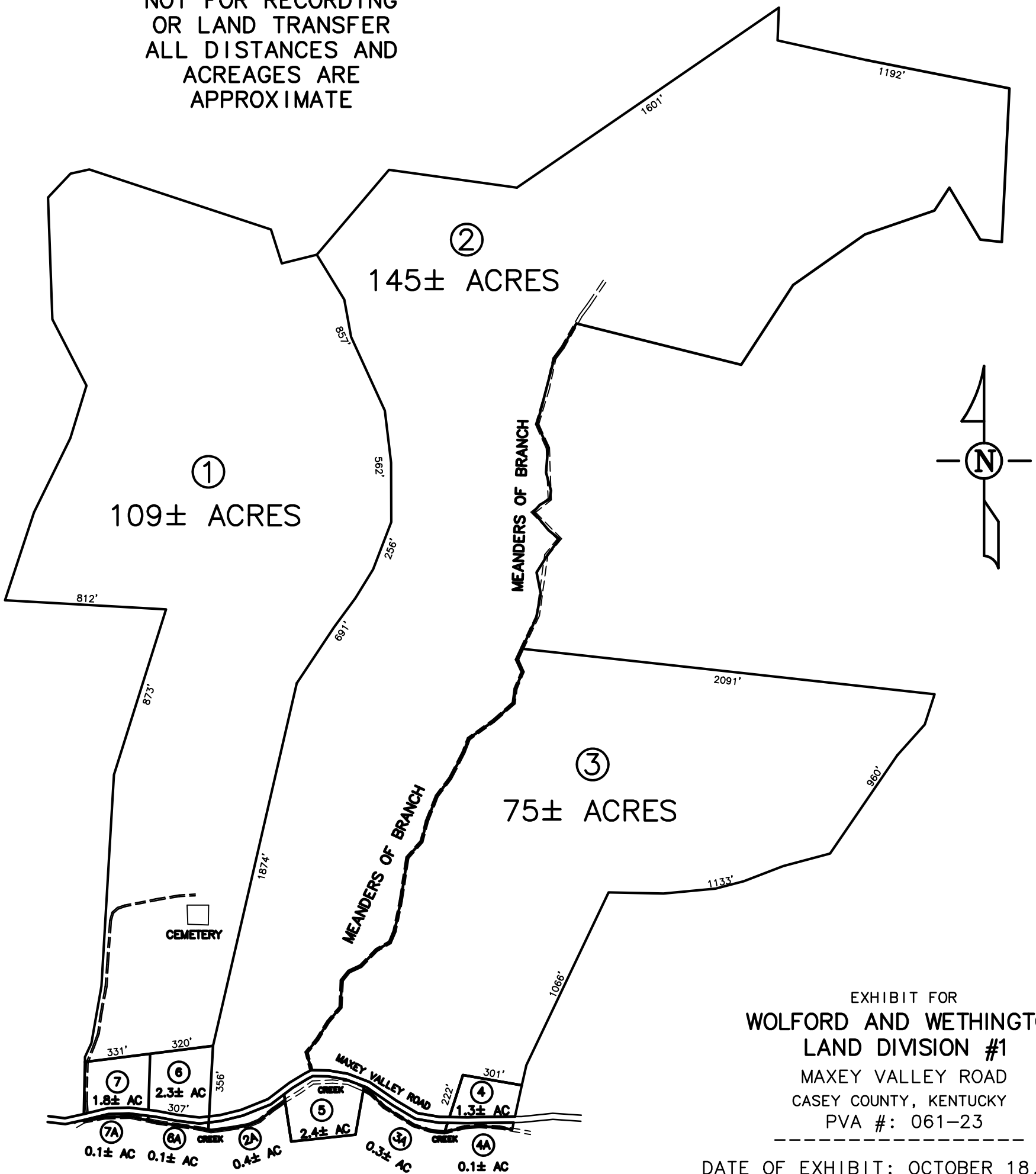


EXHIBIT FOR  
**WOLFORD AND WETHINGTON**  
**LAND DIVISION #1**  
MAXEY VALLEY ROAD  
CASEY COUNTY, KENTUCKY  
PVA #: 061-23

DATE OF EXHIBIT: OCTOBER 18, 2021  
MILLER, TUNGATE LAND SURVEYING, LLC.  
202 BROOKSIDE AVE  
CAMPBELLSVILLE, KY 42718  
PHONE: (270) 465-2831 130WW21