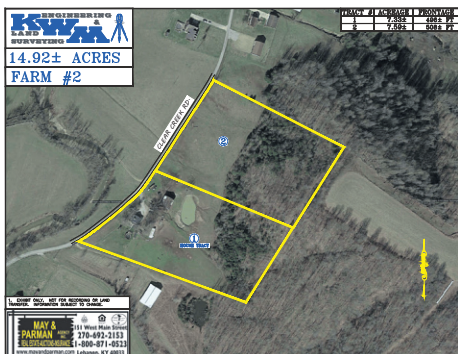


# ABSOLUTE AUCTION

## 2 FARMS ST. JOE COMMUNITY

### SATURDAY DEC. 2ND 10:30AM



**Farm #1** – 16.85 acres m/l in 4 tracts.  
On Bucknall Rd off of Clear Creek Rd.  
Raywick, Ky.

**Farm #2** – 14.92 acres m/l in 2 tracts  
1480 Clear Creek Rd. Raywick, Ky.

**Farm #1** – 16.85 acres m/l in 4 tracts

Tract #1 – 10.36 acres m/l with cropland and 2 barns.

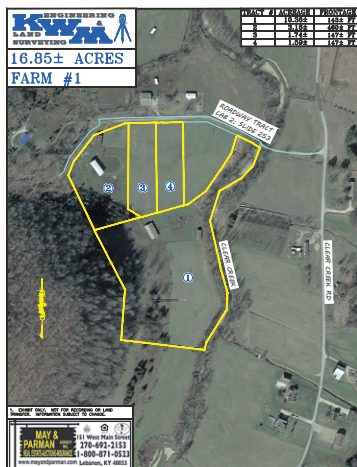
Tract #2 – 3.16 acres m/l with pond and 2 buildings.

Tracts #3 & #4 being 1.74 & 1.59 acres each of cropland.

**Farm #2** – 14.92 acres m/l in 2 tracts.

Tract #1 – 7.33 acres m/l with a house, barn and a pond. Land is cleared and wooded.

Tract #2 – 7.59 acres m/l of cleared and wooded land.



#### ORDER OF SALES

**Farm #1** – 16.85 acres m/l as a whole. Then tracts 1 thru 4 by the tract, pick and choose.

**Farm #2** – 14.92 acres m/l as a whole. Tract #1 (house tract), then tract #2 by the tract.

House on Tract #1 – Farm #2 was built prior to 1978 and there is the possibility of lead base paint. This serves as your 10 day notice prior to auction to do your inspection.

**NOTE:** 10% buyers premium will be added to all winning bids. 20% down payment day of sale, balance in 30 days.

**Announcements day of sale, supersede all prior announcements.**

Principle Broker/Auctioneer Wm. Monty Parman 270-402-1176

TEAM MAY & PARMAN  
**IT'S SALE TIME!**

www.mayandparman.com

**MAY & PARMAN**

151 West Main Street

270-692-2153

270-402-1176



Lebanon, KY 40033