

IT'S SALE TIME... IT'S SALE TIME!! IT'S SALE TIME... IT'S SALE TIME!!

CROPLAND

SOLD IN 1 TRACT

ABSOLUTE AUCTION

T. Ray & Virgie Mattingly Estate

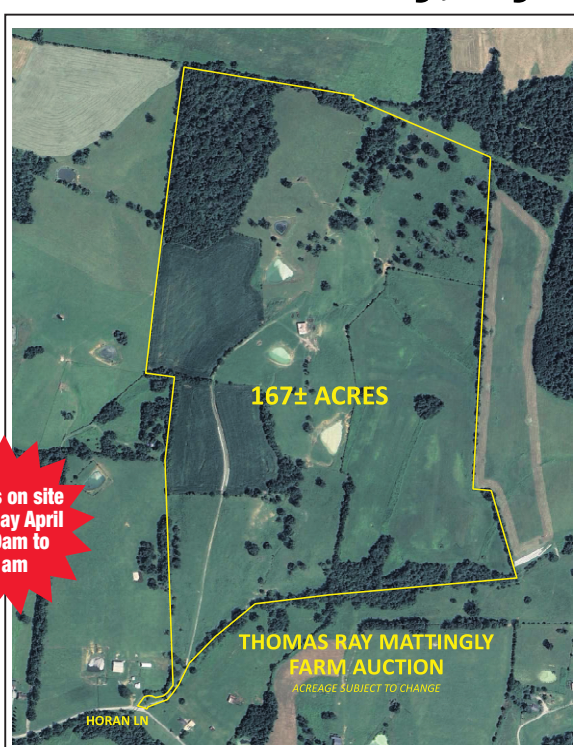
167.3 acres m/l in 1 tract

SATURDAY APRIL 13TH 10:30AM

Located: 1020 Horan Lane Springfield Marion County, Ky.

This is an outstanding crop and cattle farm. Due to Planning & Zoning Regulations, this is being offered all together and not in tracts. Farm has over 60 acres of land that is in or has been in row crops. Farm is well fenced, 4 large ponds, county water at the barn. Here is a rare opportunity to purchase a farm at auction being offered as the entire farm only.

**Agents on site
Saturday April
6th 9am to
11am**



NOTE: 10% buyers premium will be added to the winning bid. 20% down day of sale, balance in 30 days.

ANNOUNCEMENTS DAY OF SALE SUPERSEDE ALL PRIOR ANNOUNCEMENTS.

PRINCIPLE BROKER/AUCTIONEER WM. MONTY PARMAN 270-402-1176

FOR MORE INFORMATION

GO TO WWW.MAYANDPARMAN.COM

TEAM MAY & PARMAN

IT'S SALE TIME!

MAY & PARMAN
151 West Main Street
270-692-2153
270-402-1176
www.mayandparman.com  Lebanon, KY 40033

IT'S SALE TIME... IT'S SALE TIME!! IT'S SALE TIME... IT'S SALE TIME!!

IT'S SALE TIME... IT'S SALE TIME!! IT'S SALE TIME... IT'S SALE TIME!!

IT'S SALE TIME... IT'S SALE TIME!! IT'S SALE TIME... IT'S SALE TIME!!