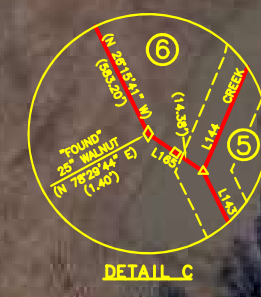


GPS NOTE:
The survey shown hereon is based on GPS data collected by Miller, Tungate Land Surveying, LLC, using both Static and RTK methods with dual frequency Carlson BRX6+ and BRX7+ receivers. Data was also collected using conventional EDM equipment. The Kentucky Single Zone Coordinate, NAD 83 was used for coordinate system. Acceptable positional tolerances were achieved by redundant measurements on all GPS control points.



AUCTION EXHIBIT
NOT TO SCALE
PRELIMINARY PLAT
NOT FOR RECORDING
OR LAND TRANSFER
ALL DISTANCES AND
ACREAGES ARE
APPROXIMATE

FLOOD PLAIN NOTE:
As indicated on map number 21045C0125E, eff. 5/23/2023 of the FEMA Flood Map Service MAP, PART of this site is located in Zone 7A which has been determined to be inside of the 100 year flood plain (1% Annual Flood Change).

OWNER'S CERTIFICATION
I do hereby certify that I am the owner of record of the property shown hereon, and do hereby adopt this survey.

OWNER _____ **DATE** _____

CERTIFICATE OF ACKNOWLEDGEMENT
I certify that I am a notary for the state-at-large. I further certify that the above owner signature(s) are legal and have been executed voluntarily, to the best of my knowledge and belief.

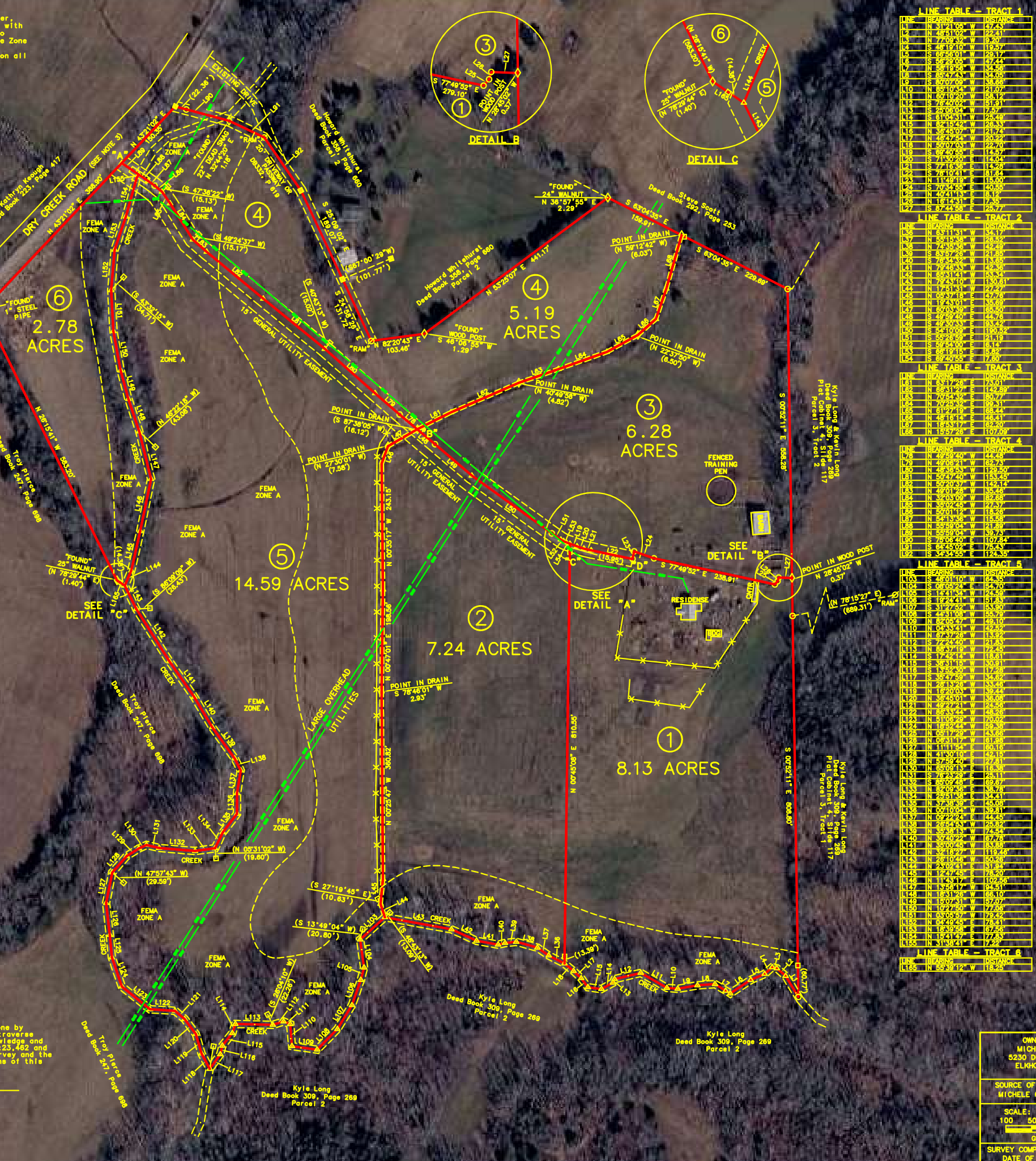
Notary Public _____ **Date** _____

Date Commission Expires _____

CERTIFICATION
I hereby certify that the survey depicted by this plat was done by persons under my direct supervision by the method of random traverses with sideshots and is true and correct to the best of my knowledge and belief. The unadjusted precision ratio of the traverse was 1:23,462 and was adjusted. The survey as shown hereon is a Rural class survey and the accuracy and precision of said survey meets all specifications of this class.

Gregory H. Tungate, Surveyor _____ **DATE** _____
Kentucky PLS #3997

Surveyor's Note:
This survey does not constitute a title search by this surveyor and as a result the undersigned is not responsible for the investigation or independent search for easements, appurtenant easements or any other facts that an accurate and current title search may disclose.



LINE TABLE - TRACT 1

LINE	BEARING	DISTANCE
L1	N 31°21'00" W	47.43
L2	N 45°11'02" W	22.41
L3	N 48°12'10" W	19.57
L4	S 86°56'01" W	29.17
L5	S 56°29'05" W	47.44
L6	N 38°19'23" W	13.43
L7	S 85°47'23" W	14.08
L8	S 80°07'09" W	35.66
L9	N 89°10'24" W	21.07
L10	S 74°42'41" W	13.43
L11	S 76°40'02" W	15.91
L12	S 25°05'04" W	7.57
L13	S 31°02'31" W	25.24
L14	S 74°42'41" W	13.43
L15	S 74°42'41" W	13.43
L16	N 36°45'07" W	21.74
L17	N 46°47'24" W	20.22
L18	N 50°07'03" W	22.70
L19	S 74°42'41" W	13.43
L20	S 71°30'26" W	14.04
L21	S 77°15'36" E	11.28
L22	S 74°42'41" W	13.43
L23	N 17°49'41" E	15.44
L24	S 70°24'05" E	40.55
L25	N 40°41'13" E	8.12
L26	S 87°42'38" E	15.44
L27	S 87°42'38" E	15.44

LINE TABLE - TRACT 2

LINE	BEARING	DISTANCE
L36	N 52°11'31" W	54.17
L37	N 52°11'31" W	54.17
L38	N 72°45'36" W	42.49
L39	S 85°27'26" W	21.85
L40	S 76°24'22" W	13.85
L41	S 77°42'41" W	13.43
L42	N 65°31'24" E	25.33
L43	N 72°45'36" W	42.49
L44	N 17°49'41" E	27.27
L45	N 17°49'41" E	27.27
L46	N 19°23'01" E	35.69
L47	N 80°03'39" E	65.00
L48	S 49°29'26" E	24.75
L49	S 49°29'26" E	24.75
L50	S 41°00'09" E	190.52
L51	S 55°26'59" E	21.19
L52	S 59°43'49" E	8.13
L53	S 89°19'49" E	14.92
L54	S 89°40'55" E	17.30

LINE TABLE - TRACT 3

LINE	BEARING	DISTANCE
L61	N 52°11'31" W	25.91
L62	N 52°11'31" W	14.23
L63	N 70°21'39" E	80.77
L64	N 70°21'39" E	80.77
L65	N 51°11'14" E	45.41
L66	N 18°43'17" E	82.20
L67	N 18°43'17" E	82.20
L68	N 19°27'26" E	107.09

LINE TABLE - TRACT 4

LINE	BEARING	DISTANCE
L76	S 87°30'11" W	104.20
L77	N 49°06'21" W	82.73
L78	N 49°06'21" W	82.73
L79	N 49°06'21" W	82.73
L80	N 49°06'21" W	82.73
L81	N 49°06'21" W	82.73
L82	N 49°06'21" W	82.73
L83	N 49°06'21" W	82.73
L84	N 49°06'21" W	82.73
L85	N 49°06'21" W	82.73
L86	N 49°06'21" W	82.73
L87	N 49°06'21" W	82.73
L88	N 49°06'21" W	82.73
L89	N 49°06'21" W	82.73
L90	N 49°06'21" W	82.73
L91	N 49°06'21" W	82.73
L92	N 49°06'21" W	82.73

LINE TABLE - TRACT 5

LINE	BEARING	DISTANCE
L103	S 87°30'11" W	104.20
L104	N 49°06'21" W	82.73
L105	N 49°06'21" W	82.73
L106	N 49°06'21" W	82.73
L107	N 49°06'21" W	82.73
L108	N 49°06'21" W	82.73
L109	N 49°06'21" W	82.73
L110	N 49°06'21" W	82.73
L111	N 49°06'21" W	82.73
L112	N 49°06'21" W	82.73
L113	N 49°06'21" W	82.73
L114	N 49°06'21" W	82.73
L115	N 49°06'21" W	82.73
L116	N 49°06'21" W	82.73
L117	N 49°06'21" W	82.73
L118	N 49°06'21" W	82.73
L119	N 49°06'21" W	82.73
L120	N 49°06'21" W	82.73
L121	N 49°06'21" W	82.73
L122	N 49°06'21" W	82.73
L123	N 49°06'21" W	82.73
L124	N 49°06'21" W	82.73
L125	N 49°06'21" W	82.73
L126	N 49°06'21" W	82.73
L127	N 49°06'21" W	82.73
L128	N 49°06'21" W	82.73
L129	N 49°06'21" W	82.73
L130	N 49°06'21" W	82.73
L131	N 49°06'21" W	82.73
L132	N 49°06'21" W	82.73
L133	N 49°06'21" W	82.73
L134	N 49°06'21" W	82.73
L135	N 49°06'21" W	82.73
L136	N 49°06'21" W	82.73
L137	N 49°06'21" W	82.73
L138	N 49°06'21" W	82.73
L139	N 49°06'21" W	82.73
L140	N 49°06'21" W	82.73
L141	N 49°06'21" W	82.73
L142	N 49°06'21" W	82.73
L143	N 49°06'21" W	82.73
L144	N 49°06'21" W	82.73
L145	N 49°06'21" W	82.73
L146	N 49°06'21" W	82.73
L147	N 49°06'21" W	82.73
L148	N 49°06'21" W	82.73
L149	N 49°06'21" W	82.73
L150	N 49°06'21" W	82.73
L151	N 49°06'21" W	82.73
L152	N 49°06'21" W	82.73
L153	N 49°06'21" W	82.73
L154	N 49°06'21" W	82.73
L155	N 49°06'21" W	82.73
L156	N 49°06'21" W	82.73
L157	N 49°06'21" W	82.73
L158	N 49°06'21" W	82.73
L159	N 49°06'21" W	82.73
L160	N 49°06'21" W	82.73